



HERE'S WHAT WE'VE BEEN UP TO

We are excited to update you on our work with our partners. In collaboration with the House of Christmas, Cénacle de La Lumière, and The Healthcare taskforce, we continue to create long-term sustainable models in essential sectors. We are committed to work diligently to replicate these solutions across the Lebanese territory.



LIVELIHOOD

Implementing partner  THE HOUSE OF CHRISTMAS

9 SMALL BUSINESSES HAVE NOW REOPENED, ARE EXPORTING AND SUSTAINABLY GROWING

We are thrilled to announce the completion of the second phase of our intervention with the businesses affected by the Beirut Blast, in partnership with The House of Christmas (HOC).



Intervention Completed | June 2021 to January 2023



TOTAL spent to date:
\$208,000



This project was made possible with the support of and

After an extensive 3,750 hours of strategic consultancy, which included implementing solid strategies, uplifting the identity of the businesses, and procuring new machinery and equipment, the HOC team was able to help 9 manufacturing and F&B businesses in Gemmayzeh, Mar Mikhael, Geitawi and Bourj Hammoud.

With this, we have now supported a **total of 115 micro, small, and medium enterprises (MSMEs)** since the August 4th blast, and are proud to say that they are all still operational.

“ Thanks to everyone who stood by us, and the perseverance of my daughter Zahraa, we found the courage to open again

“ Making a dough is about pouring all your love and passing it on to generations, and that, machines cannot replace.

Mona Dorr - Em Ali

upcoming in next issue

THE MANUFACTURING HUB MODEL

Our Livelihood intervention will now focus on small manufacturing industries across Lebanon.

The Manufacturing Hub Model aims to help struggling small factories by turning them into shared manufacturing hubs. Stay tuned for the first!

HELP US PROTECT THE LIVELIHOODS OF MANY



DONATE

After completing the post-blast intervention in 2022 and reaching 20,082 people, we move onto our second partnership with Cénacle de La Lumière (CDLL):

THE MENTALLY HEALTHY SCHOOL PROGRAM

Our focus is now turned to schools as they play a key role in identifying early warning signs and intervening promptly to alleviate mental health issues of children and young adults in the face of challenges today.

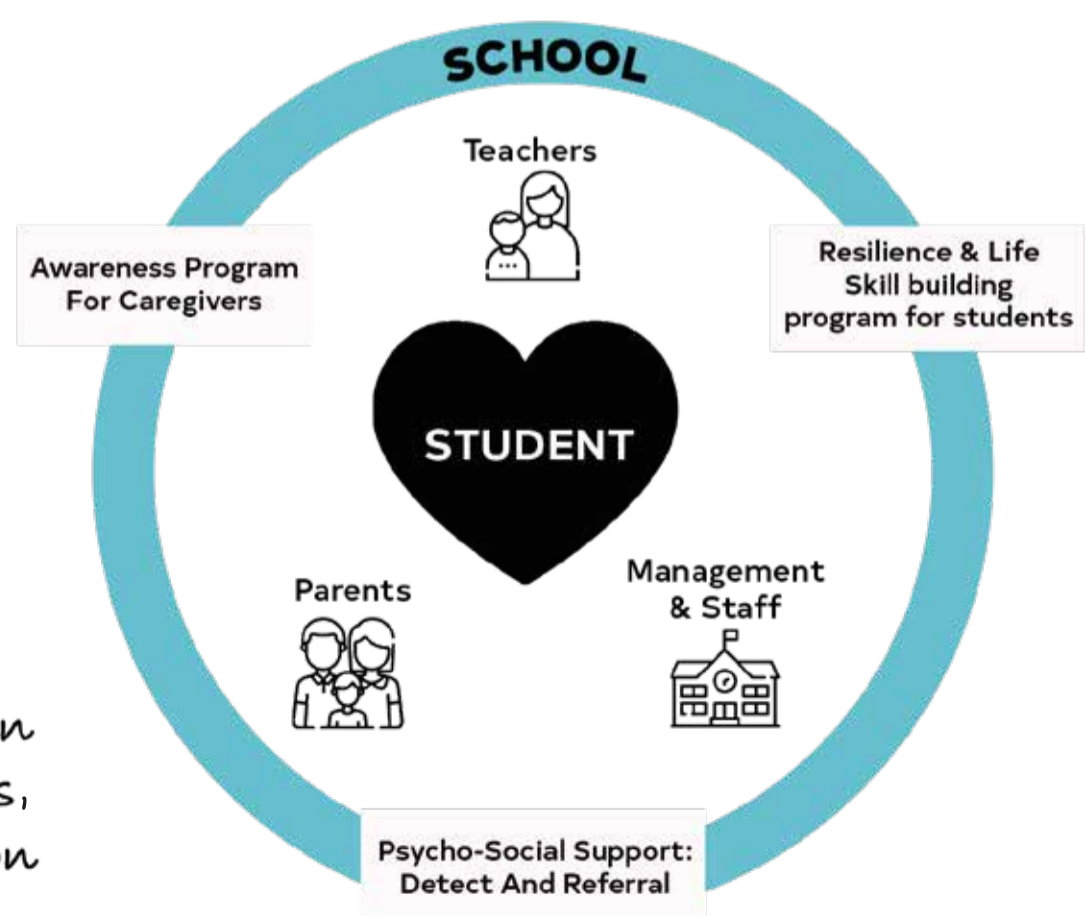
25% of the youth in Lebanon are experiencing mental health distress; but **ONLY 5%** seek support due to the lack of awareness of their caregivers, the cost or unavailability of treatment, and social stigma. An alarming fact that demands high urgency and the action of all the community.

**Psychiatric disorders among adolescents from Lebanon: prevalence, correlates, and treatment gap - Maalouf, F. T. et al. (2016).*



“

Our program empowers students to build resilience in the face of today's challenges, stay in school, and transition smoothly into adulthood.



With CDLL, we designed the "Mentally Healthy School Program" to:

- **Strengthen the ecosystem surrounding the students** by championing and empowering parents, teachers, caregivers, and school management so together, they create a healthy and nurturing environments at home and in the classroom.
- Invest in prevention and provide a multidisciplinary psycho-social support to **empower students to build resilience in the face of hardships.**

The program launches in 5 schools starting April.
For just \$5,000/ school , help us reach 15

INVEST IN THE GENERATION OF TOMORROW

 **DONATE**



HEALTHCARE

MEET THE HEALTHCARE SOCIAL ENTREPRENEURS TASKFORCE (HSE)

Once reputed world-class quality in the region, the Lebanese healthcare sector is now being compared to a death sentence.

60%

of the population do not have public or private healthcare coverage

80%

rely on private care

Hospitals are facing talent loss and rising bills becoming inaccessible to many, while Primary Healthcare Centers are overwhelmed, under-resourced with limited services; a dire situation leaving many without adequate support.

To respond to this growing problem, we have put together a task force of entrepreneurs from the field and developed a strategy to strengthen healthcare networks in areas that are most in need and ensure access to the most vulnerable.

The Team



CYRIL CHEMALI
MD, MBA
HSE LEAD
Volunteer

15 years in the medical equipment industry
A pillar in delivering the Beirut Blast Healthcare intervention



DR MICHELLE HADDAD
MD, MHS, MPH, MHM
NETWORK MANAGER & COORDINATOR
Part Timer

Family Medicine and Community Health specialist
Public Health consultant



REMY DAOU
MD, MHM
PHC RELATIONSHIP MANAGER
Volunteer

Medical Director Family Medicine Center and PHC at Hotel Dieu de France
Head of Family Medicine Department - Saint Joseph University



TONI TOUFIC
MBA
Volunteer

Healthcare Institution Assessment
Biomedical Engineering

HEALTH IS A BASIC RIGHT FOR ALL



DONATE



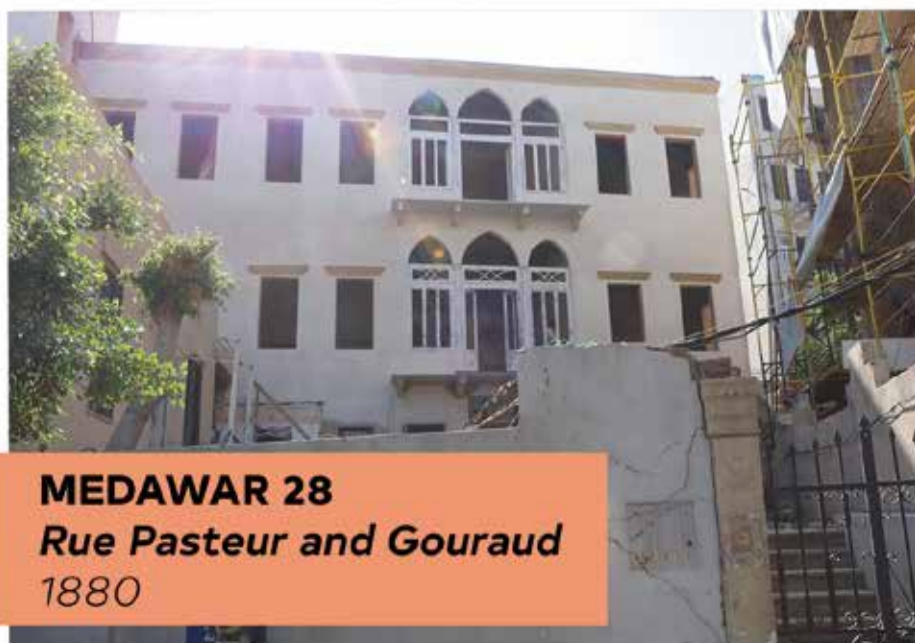
HERITAGE

Implementing partner



REHABILITATING THE ST NICOLAS CLUSTER: ONE BUILDING REHABILITATED, AND TWO IN THE WORKS

After rehabilitating 5 buildings in Gemmayzeh and Mar Mikhael with the House of Christmas, together we take a step North on Rue Gouraud to bring another iconic group of buildings and their communities back to life.



MEDAWAR 28
Rue Pasteur and Gouraud
1880

SCOPE OF WORK: PARTIAL REHABILITATION

STATUS : FINAL STAGES

BUDGET: \$150,000 - FULLY SECURED

SOCIAL IMPACT: 15 DIRECT BENEFICIARIES

DONOR: FRIENDS OF THE FAMILY (PRIVATE)

In partnership with



مبادرة بيروت للتراث
BEIRUT HERITAGE INITIATIVE

In a second partnership with the Beirut Heritage Initiative, we wrap up the rehabilitation of Medawar 28, following the initial phase of works that was carried out by Arc-en-Ciel and other NGOs.

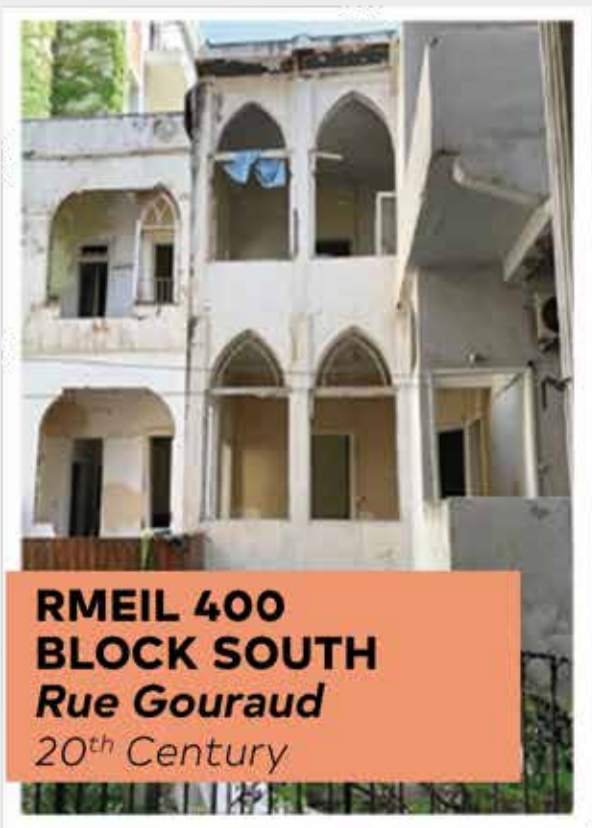
During this project, we were moved by the support surrounding the resident family. Their friends came together in a heartwarming display of love and raised the necessary funds to complete the rehabilitation, allowing the family to return home by spring 2023. We are deeply grateful for their trust and support.



- SCOPE OF WORK:** PARTIAL REHABILITATION
- STATUS :** IN PROGRESS
- BUDGET TO RAISE:** \$145,000 - 25% SECURED
- SOCIAL IMPACT:** 20 DIRECT BENEFICIARIES
- DONOR:**  + PRIVATE DONORS

The Rmeil 400 family has been unable to return home for 2.5 years after the Beirut explosion destroyed their house and source of income.

The project consists of two beautifully designed buildings connected by a courtyard, and said to be one of the first structures to be built in the area. At this strategic intersection, there are also 8 adjacent businesses.



Thanks to the support of IMPACT LEBANON, we have launched the structure rehabilitation efforts on both buildings and continue to raise funds to complete the works. We remain committed to preserve our culture and identity.

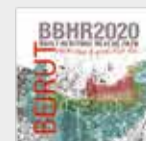
Consultant

RH - Architects

Contractor

ACE

With the support of



HELP US PROTECT OUR HERITAGE

 **DONATE**



Giving a little can help a lot

Together for Lebanon's Recovery

Learn more about our partners



THE HSE



Copyright (c) [2023] . All rights reserved